

■ Main External and Connection Dimension

Unit:mm

Type	NominalDiameter		Class 300Lb								WT(kg)
	in	mm	L	D	D1	D2	b	Z-Φd	H	D0	
J41H-300Lb J41W-300LbP J41H-300LbP J41W-300LbR J41H-300LbL J41W-300LbRL	1/2"	15	152	95	66.5	35	15	4-Φ15	190	125	5.2
	3/4"	20	178	117	82.5	43	16	4-Φ19	212	125	7.3
	1"	25	203	124	89	51	18	4-Φ19	231	125	9.5
	1 1/2"	40	229	156	114.5	73	20.7	4-Φ22	391	180	17.6
	2"	50	267	165	127	92	22	8-Φ19	406	180	26
	2 1/2"	65	292	190	149	105	25	8-Φ22	457	240	30
	3"	80	318	210	168.5	127	29	8-Φ22	470	280	35
	4"	100	356	254	200	157	32	8-Φ22	590	280	56
	5"	125	440	279	235	186	35	8-Φ22	614	320	96
	6"	150	444	318	270	216	37	12-Φ22	711	360	120
	8"	200	559	381	330	270	42	12-Φ25	750	450	212
	10"	250	622	441	387.5	324	48	16-Φ29	1012	500	460
12"	300	711	521	451	381	51	16-Φ32	1231	600	615	

■ Main External and Connection Dimension

Unit:mm

Type	NominalDiameter		Class 600Lb								WT(kg)
	in	mm	L	D	D1	D2	b	Z-Φd	H	D0	
J41H-600Lb J41W-600LbP J41H-600LbP J41W-600LbR J41H-600LbL J41W-600LbRL	1/2"	15	165	95	66.5	35	22	4-Φ15	285	160	6.0
	3/4"	20	190	117.5	82.5	43	23	4-Φ19	285	160	10.0
	1"	25	216	124	89	51	25	4-Φ19	313	160	12.0
	1 1/2"	40	241	156	114.5	73	30	4-Φ22	365	240	19.0
	2"	50	292	165	127	92	33	8-Φ19	444	240	35
	2 1/2"	65	330	190	149	105	36	8-Φ22	483	240	50
	3"	80	356	210	168	127	39	8-Φ22	533	280	60
	4"	100	432	273	216	157	45	8-Φ25	622	360	110
	5"	125	508	330	267	186	52	8-Φ29	750	360	200
	6"	150	559	356	292	216	55	12-Φ29	800	500	230
	8"	200	600	419	349	270	63	12-Φ32	927	550	410
	10"	250	787	508	432	324	71	16-Φ35	1257	600	770
12"	300	838	559	489	381	74	20-Φ35	1468	680	1140	

■ Chief Features

- Fullport ,Floating Or Trunnion Mounted Type
- Bolte Bonnet
- Blow Out Proof Stem
- Structure Improve on API
- Opening And Closing Position
- Available With Worm Gear Operator
- Flanged Ends
- Butt-welding Ends

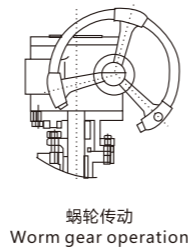
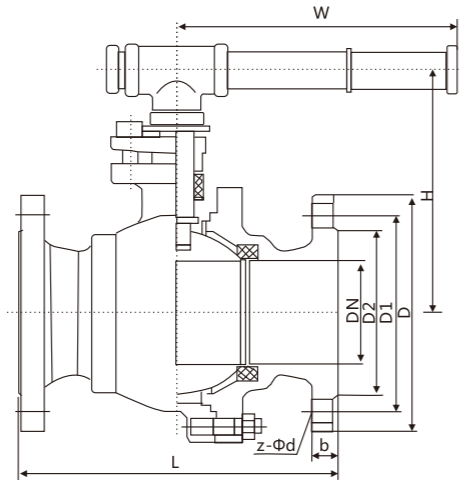


■ Prodrct Specification

Product Specification	Design spec	Face to Face	Flanged End	Test & Check	Marking	Supply
	GB/T 12237 JB/T 7745	GB/T 12237 JB/T 7745	JB/T 79	JB/T 9092	GB/T12220	JB/T 7928
	API 608 API 6D	ANSI B16.10 API6D	ANSI B16.5	API 598 API6D	MSS SP-25 API 6D	API 608 API 6D

■ Main Part Material

Part Name	Body Material Code					
	JB/T 7298			API 608/API 6D		
Body/Bonnet	WCB	25	ZG1Cr18Ni9Ti	WCB	A105	CF8M
Ball	2Cr13	2Cr13	1Cr18Ni9Ti	A182-F304	A182-F304	A182-F316
Stem	2Cr13	2Cr13	1Cr18Ni9Ti	A182-F6a	A182-F6a	A182-F316
Seat Ring	25		1Cr18Ni9Ti	A105		A182-F316
Seat	PTFE		R.PTFE	PTFE		R.PTFE
Packing	PTFE+FPM			PTFE+FPM		
Gasket	18-8Flexible Graphite					
Bolt	35	35	1Cr18Ni9Ti	A193-B7	A193-B7	A193-B8M
Sultable Temp	-29-212°C		-40~121°C		-29-121°C	
Suitable Medium	water,oll,steam		Nitrc Acid	water,oll,steam		Nitrc Acid



■ Main External and Connection Dimension

单位 Unit:mm

Type	Nominal Diameter	PN1.6MPa								WT(kg)
		L	D	D1	D2	b	Z-Φd	H	W	
Q41F-16C Q41F-16P	15	130	95	65	45	14	4-Φ14	78	140	3
	20	140	105	75	55	14	4-Φ14	84	160	4
	25	150	115	85	65	14	4-Φ14	95	180	5
	32	165	135	100	78	16	4-Φ18	150	250	9
	40	180	145	110	85	16	4-Φ18	150	300	11
Q641F-16C Q641F-16P	50	200	160	125	100	16	4-Φ18	170	350	15
	65	220	180	145	120	18	4-Φ18	195	350	19
Q9B41F-16C Q9B41F-16P	80	250	195	160	135	20	8-Φ18	215	400	27
	100	280	215	180	155	20	8-Φ18	250	500	38
	125	320	245	210	185	22	8-Φ18	265	600	58
	150	360	280	240	210	24	8-Φ18	270	800	81
	200	400	335	295	265	26	12-Φ23	330	800	95
	250	450	405	355	320	30	12-Φ25	450	1300	140

■ Main External and Connection Dimension

Unit:mm

Type	Nominal Diameter	PN2.5MPa								WT(kg)
		L	D	D1	D2	b	Z-Φd	H	W	
Q41F-25C Q41F-25P	15	130	95	65	45	16	4-Φ14	103	100	3
	20	140	105	75	55	16	4-Φ14	112	160	4
	25	150	115	85	65	16	4-Φ14	123	160	6
	32	178	135	100	78	18	4-Φ18	150	250	10
Q641F-25C Q641F-25P	40	190	145	110	85	18	4-Φ18	156	250	14
	50	216	160	125	100	20	4-Φ18	172	350	20
	65	241	180	145	120	22	8-Φ18	197	350	25
Q9B41F-25C Q9B41F-25P	80	283	195	160	135	22	8-Φ18	222	450	30
	100	305	230	190	160	24	8-Φ23	253	450	40
	125	381	270	220	188	28	8-Φ25	275	600	65
	150	403	300	250	218	30	8-Φ25	286	800	85
	200	502	360	310	278	34	12-Φ25	340	1200	100
	250	568	425	370	332	36	12-Φ30	470	1400	165

■ Main External and Connection Dimension

Unit:mm

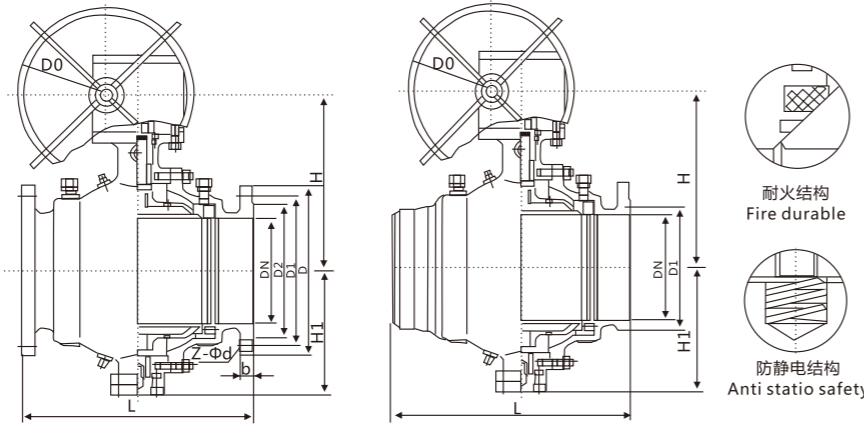
Type	(mm) Nominal Diameter	PN4.0MPa								WT(kg)
		L	D	D1	D2	b	Z-Φd	H	W	
Q41F-40C Q41F-40P	15	140	95	65	45	16	4-Φ14	103	100	3
	20	152	105	75	55	16	4-Φ14	112	160	4
	25	165	115	85	65	16	4-Φ14	123	160	6
	32	180	135	100	78	18	4-Φ18	150	250	10
	40	200	145	110	85	18	4-Φ18	156	250	14
Q641F-40C Q641F-40P	50	220	160	125	100	20	4-Φ18	172	350	20
	65	250	180	145	120	22	8-Φ18	197	350	25
	80	280	195	160	135	22	8-Φ18	222	450	30
Q9B41F-40C Q9B41F-40P	100	320	230	190	160	24	8-Φ23	253	450	40
	125	400	270	220	188	28	8-Φ25	275	600	65
	150	403	300	250	218	30	8-Φ25	286	800	85
	200	502	375	320	282	38	12-Φ30	340	1200	100
	250	568	445	385	345	42	12-Φ34	470	1400	165

■ Main External and Connection Dimension

Unit:mm

Type	Nominal Diameter	PN6.4MPa								WT(kg)
		L	D	D1	D2	b	Z-Φd	H	W	
Q41F-64C Q41F-64P	15	165	105	75	55	18	4-Φ14	105	130	3.1
	20	190	125	90	68	20	4-Φ18	125	130	4.9
	25	216	135	100	78	22	4-Φ18	135	160	7.2
	32	229	150	110	82	24	4-Φ23	150	160	8.7
Q641F-64C Q641F-64P	40	241	165	125	95	24	4-Φ23	165	230	12.1
	50	292	175	135	105	26	4-Φ23	175	230	16.7
	65	330	200	160	130	28	8-Φ23	200	400	28.2
Q9B41F-64C Q9B41F-64P	80	356	210	170	140	30	8-Φ23	210	400	36
	100	482	250	200	168	32	8-Φ25	250	700	66
	125	508	295	240	202	36	8-Φ30	295	1100	98
	150	559	340	280	240	38	8-Φ34	340	1500	142

Trunnion-mounted Ball Valves



■ Main External and Connection Dimension

Unit:mm

Type	Nominal Diameter	PN1.6MPa									WT(kg)
		L	D	D1	D2	b	Z-Φd	H	H1	D0	
Q47F-16C Q67F-16C Q47F-16P	50	178	160	125	100	16	4-Φ18	177	120	-	15
	65	190	180	145	120	18	4-Φ18	190	140	-	19
	80	203	195	160	135	20	8-Φ18	210	150	-	27
	100	229	215	180	155	20	8-Φ18	235	172	-	38
	125	356	245	210	185	22	8-Φ18	350	215	-	58
Q347F-16C Q367F-16C Q347F-16P	150	394	280	240	210	24	8-Φ23	530	250	-	81
	200	457	335	295	265	26	12-Φ23	620	290	600	140
Q647F-16C Q667F-16C Q647F-16P	250	533	405	355	320	30	12-Φ25	650	320	600	160
	300	610	460	410	375	30	12-Φ25	780	360	600	205
Q747F-16C Q767F-16C Q747F-16P	350	686	520	470	435	34	16-Φ25	790	395	800	260
	400	762	580	525	485	36	16-Φ30	920	450	800	390
Q9B47F-16C Q9B67F-16C Q9B47F-16P	450	864	640	585	545	40	20-Φ30	970	490	800	510
	500	914	705	650	608	44	20-Φ34	1100	530	800	750
	600	1067	740	770	718	48	20-Φ41	1150	590	800	1200
700	1245	910	840	788	50	24-Φ41	1850	700	800	2100	

Trunnion-mounted Ball Valves

■ Main External and Connection Dimension

Unit:mm

Type	Nominal Diameter	PN2.5MPa									WT(kg)
		L	D	D1	D2	b	Z-Φd	H	H1	D0	
Q47F-25 Q47F-25P Q67F-25	50	216	160	125	100	20	4-Φ18	177	120	-	20
	65	241	180	145	120	22	8-Φ18	190	140	-	25
	80	283	195	160	135	22	8-Φ18	210	150	-	30
Q347F-25 Q347F-25P Q367F-25	100	305	230	190	160	24	8-Φ23	235	172	-	40
	125	381	270	220	188	28	8-Φ25	350	215	-	65
	150	403	300	250	218	30	8-Φ25	530	250	-	85
Q647F-25 Q647F-25P Q667F-25	200	502	360	310	278	34	12-Φ25	620	290	600	100
	250	568	425	370	332	36	12-Φ30	650	320	600	182
	300	648	485	430	390	40	16-Φ30	780	360	600	212
Q747F-25 Q747F-25P Q767F-25	350	762	550	490	448	44	16-Φ34	790	395	800	288
	400	838	610	550	505	48	16-Φ34	920	450	800	468
	450	914	660	600	555	50	20-Φ34	970	490	800	587
Q9B47F-25 Q9B47F-25P Q9B67F-25	500	991	730	660	610	52	20-Φ41	1100	530	800	863
	600	1143	840	770	718	56	20-Φ41	1150	590	800	1396
	700	1346	955	875	815	60	24-Φ48	1850	700	800	2415

■ Main External and Connection Dimension

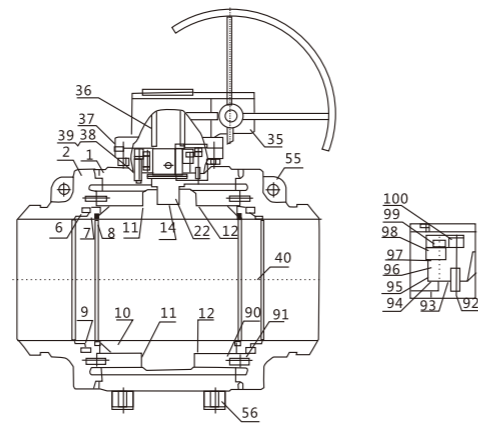
Unit:mm

产品型号 Type	公称通径 (mm) Nominal Diameter	PN4.0MPa									WT(kg)
		L	D	D1	D2	b	Z-Φd	H	H1	D0	
Q47F-40 Q47F-40P Q67F-40	50	216	160	125	100	20	4-Φ18	177	120	-	20
	65	241	180	145	120	22	8-Φ18	190	140	-	25
	80	283	195	160	135	22	8-Φ18	210	150	-	30
Q347F-40 Q347F-40P Q367F-40	100	305	230	190	160	24	8-Φ23	235	172	-	40
	125	381	270	220	188	28	8-Φ25	350	215	-	65
	150	403	300	250	218	30	8-Φ25	530	250	-	85
Q647F-40 Q647F-40P Q667F-40	200	502	375	320	282	38	12-Φ30	620	290	600	100
	250	568	445	385	345	42	12-Φ34	650	320	600	182
	300	648	510	450	408	46	16-Φ34	780	360	600	212
Q747F-40 Q747F-40P Q767F-40	350	762	570	510	465	52	16-Φ34	790	395	800	288
	400	838	655	585	535	58	16-Φ41	920	450	800	468
	450	914	680	610	560	60	20-Φ41	970	490	800	587
Q9B47F-40 Q9B47F-40P Q9B67F-40	500	991	755	670	612	62	20-Φ48	1100	530	800	863
	600	1143	890	795	730	62	20-Φ54	1150	590	800	1396
	700	1346	995	900	835	68	24-Φ54	1850	700	800	2415

■ Main External and Connection Dimension

Unit:mm

Type	Nominal Diameter	PN6.4MPa									WT(kg)	
		L	D	D1	D2	D8	b	Z-Φd	H	H1		D0
Q47F-64 Q47F-64P Q67F-64	50	292	175	135	105	88	26	4-Φ23	177	120	-	21
	65	330	200	160	130	110	28	8-23	190	140	-	28
	80	356	210	170	140	121	30	8-23	210	150	-	36
Q347F-64 Q347F-64P Q367F-64	100	432	250	200	168	150	32	8-25	235	172	-	66
	125	508	295	240	202	176	36	8-30	350	215	-	98
	150	559	340	280	240	204	38	8-34	530	250	-	142
Q647F-64 Q647F-64P Q667F-64	200	660	405	345	300	260	44	12-34	620	290	600	287
	250	787	470	400	352	313	48	12-41	650	320	600	540
	300	838	530	460	412	364	54	16-41	780	360	600	780
Q747F-64 Q747F-64P Q767F-64	350	889	595	525	475	422	60	16-41	790	395	800	1000
	400	991	670	585	525	474	66	16-48	920	450	800	1300
	450	1092	670	630	570	524	70	20-48	970	490	800	1700
Q9B47F-64 Q9B47F-64P Q9B67F-64	500	1194	800	705	640	576	70	20-54	1100	530	800	2100
	600	1397	930	820	750	678	76	20-58	1150	590	800	3400

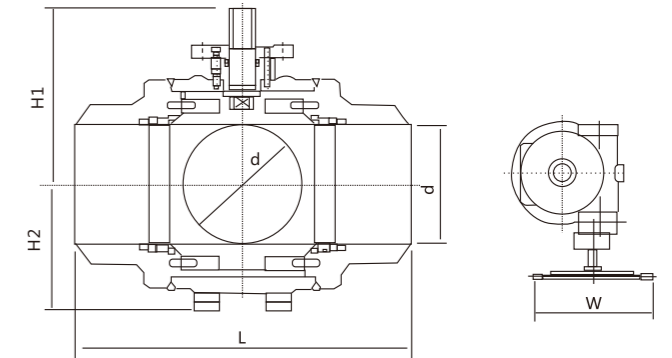


■ Technical Specification

Pressures, The Temperature Class: According to ASME B16.34
 wall Thickness of The valve: ASME B16.34
 The Size of The Flow Hole: API6D
 Face-to-face Dimension: ASME B16.10
 The Size of The Welding End: ASME B16.25
 Test And Inspection: API 598
 Selection of Materials For The Body: A105,LF2,LF3,F304,F316

■ Main Part Material

NO.	Name	Carbon steel series material	NO.	Name	Carbon steel series material
1	Canter bodies	ASTM A105	40	Oil injection valve	Carbon steel
2	About bodies	ASTM A105	55	Hanger plates	Carbon steel
6	Springs	INCONELX-750	56	Valve seat	Carbon steel
7	Valve seats support rings	ASTM A105	58	Sewage valve/venting valve	Carbon steel
8	Seel packing collars	RPTFE/VITON	90	Scale board	ASTM A105
9	O ring seal circle	VITON	91	scale board pins	ANSI 1025
10	Spheroids	ASTM A105	92	Positioningpins	ANSI 1025
11	Sliding bearings	304+PTFE	93	O seal packing collar	VITON
12	Thrust bearings	304+PTFE	94	Valve lever filing piece	304+PTFE
14	Static electricity springs	ASTM A276-316	95	O seal packing collar	VITON
22	stem	ASTM A182-F6a	96	Joins the plate	ASTM A105
35	Worm-gear case	CAST IRON	97	O seal packing collar	VITON
36	key	ANSI 1045	98	Gland bush	ASTM A105
37	Bolt	ASTM A193-B7/B7M	99	Bolt	ASTM A193-B7/B7M
38	Stud	ASTM A193-B7/B7M	100	Bolt	ASTM A193-B7/B7M
39	Hexagonal nut	ASTM A194-2H/2HM			



■ Main Part Material

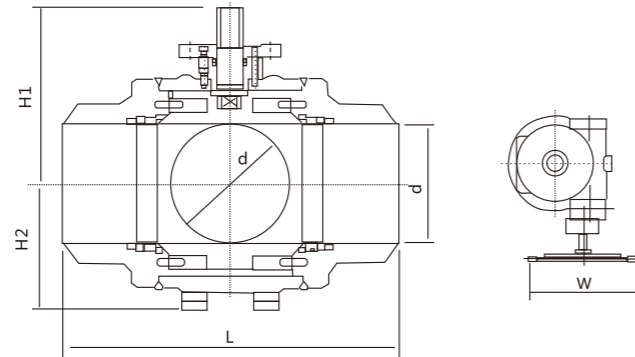
Pressure	NPS	(inch)					weight (kg)
		d	L	H1	H2	W	
150Lb 300Lb	6	6	18	11.93	7.28	18.1	185
	8	8	20.5	13.47	8.9	19.1	276
	10	10	22	14.9	10.7	27.8	385
	12	12	25	16.44	12.25	27.8	535
	14	13.25	30	17.9	13.7	27.8	735
	16	15.25	33	21.95	16.4	31.5	1585
	18	17.25	36	23.54	17.83	31.5	2340
	20	19.25	39	24.8	18.86	31.5	2520
	24	23.25	45	27.79	23.11	31.5	3985
	26	25	49	30.59	23.62	31.5	4800
	28	27	53	31.49	25.59	31.5	5760
	30	29	55	33.85	27.24	31.5	6715
32	30.75	60	35.75	28.98	31.5	8120	

Nominal Pressure	DN	(inch)					weight (kg)
		d	L	H1	H2	W	
2.0MPa 5.0MPa	150	152	457	303	185	460	185
	200	203	521	342	226	460	276
	250	254	559	378.5	272	705	385
	300	305	635	418	311	705	535
	350	337	762	455	348	705	735
	400	387	838	558	417	800	1585
	450	438	914	598	453	800	2340
	500	489	991	630	479	800	2520
	600	591	1143	705	587	800	3985
	650	635	1245	777	600	800	4800
	700	686	1346	800	650	800	5760
750	737	1397	860	692	800	6715	
800	781	1524	908	736	800	8120	

■ Main Part Material

Pressure	NPS	(inch)					weight (kg)
		d	L	H1	H2	W	
600Lb	6	6	22	12.17	9.65	18.1	230
	8	8	26	14.1	11.81	27.8	445
	10	10	31	16.1	13.38	27.8	658
	12	12	33	18.68	15.35	31.5	952
	14	13.25	35	19.75	16.85	31.5	1330
	16	15.25	39	20.96	18.70	31.5	2040
	18	17.25	43	25.04	21.45	31.5	2890
	20	19.25	47	26.75	22.44	31.5	3350
	22	21.25	51	28.56	24.72	31.5	4165
	24	23.25	55	30.12	27.56	31.5	5650

Nominal Pressure	DN	(inch)					weight (kg)
		d	L	H1	H2	W	
10.0MPa	150	152	558.8	309	245	460	230
	200	203	660.4	358	300	705	445
	250	254	787	409	340	705	658
	300	305	838	474.4	390	800	952
	350	337	889	592	428	800	1330
	400	387	890.6	532.3	475	800	2040
	450	435	1092.2	636	545	800	2890
	500	489	1193	674.8	570	800	3350
	550	540	1295.4	725	828	800	4165
	600	591	1397	765	700	800	5650



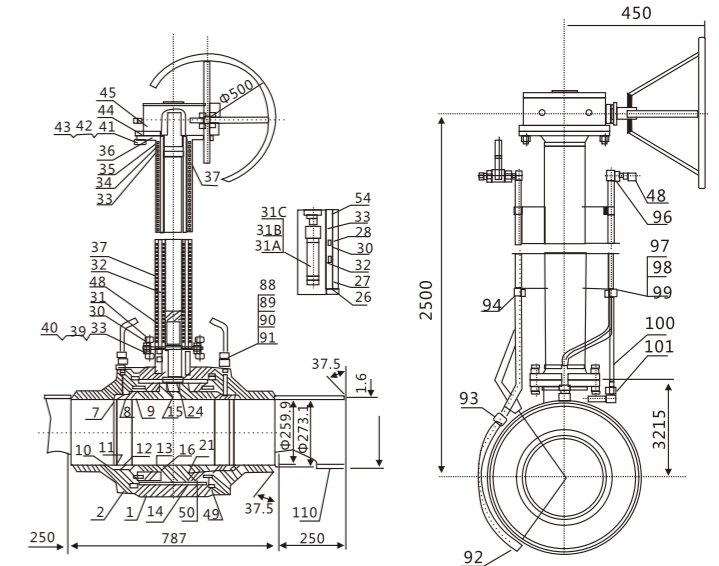
■ Main Parts Name And Material

Pressure	NPS	(inch)					weight (kg)
		d	L	H1	H2	W	
900Lb	6	6	24	12	11.81	27.8	330
	8	8	29	15.6	15.74	31.5	595
	10	10	33	16.93	16.93	31.5	935
	12	12	38	18.3	17.91	31.5	1485
	14	12.75	40.5	21.45	21.45	31.5	1955
	16	14.75	44.5	24.21	24.21	31.5	2975
	18	16.75	48	26.97	25.39	31.5	4010
	20	18.625	52	29.52	26.97	31.5	4710
	24	22.5	61	35.23	30.51	31.5	8285

Nominal Pressure	DN	(mm)					weight (kg)
		d	L	H1	H2	W	
16.0MPa	150	152	609.6	305	300	705	330
	200	203	736.6	395	400	800	595
	250	254	838.2	430	430	800	935
	300	305	965.2	465	455	800	1485
	350	324	1028.7	545	545	800	1955
	400	375	1130.3	615	615	800	2975
	450	425.5	1219.2	685	645	800	4010
	500	473	1320.8	750	685	800	4710
	600	571.5	1549.4	895	775	800	8285

Pressure	NPS	(inch)					weight (kg)
		d	L	H1	H2	W	
1500Lb	6	5.75	27.75	14.96	11.81	31.5	503
	8	7.625	32.75	19.29	15.75	31.5	795
	10	9.5	39	20.07	16.93	31.5	1615
	12	11.375	44.5	22.05	18.11	31.5	1945
	14	12.5	49.5	25	21.65	31.5	3350
	16	14.25	54.5	26.97	24.40	31.5	4615

Pressure	DN	(inch)					weight (kg)
		d	L	H1	H2	W	
25.0MPa	150	146	704.9	380	300	800	503
	200	194	831.9	490	400	800	795
	250	241	990.6	510	430	800	1615
	300	289	1130.3	560	460	800	1945
	350	317.5	1257.3	635	550	800	3350
	400	362	1384.3	685	620	800	4615



■ Main Parts Name And Material

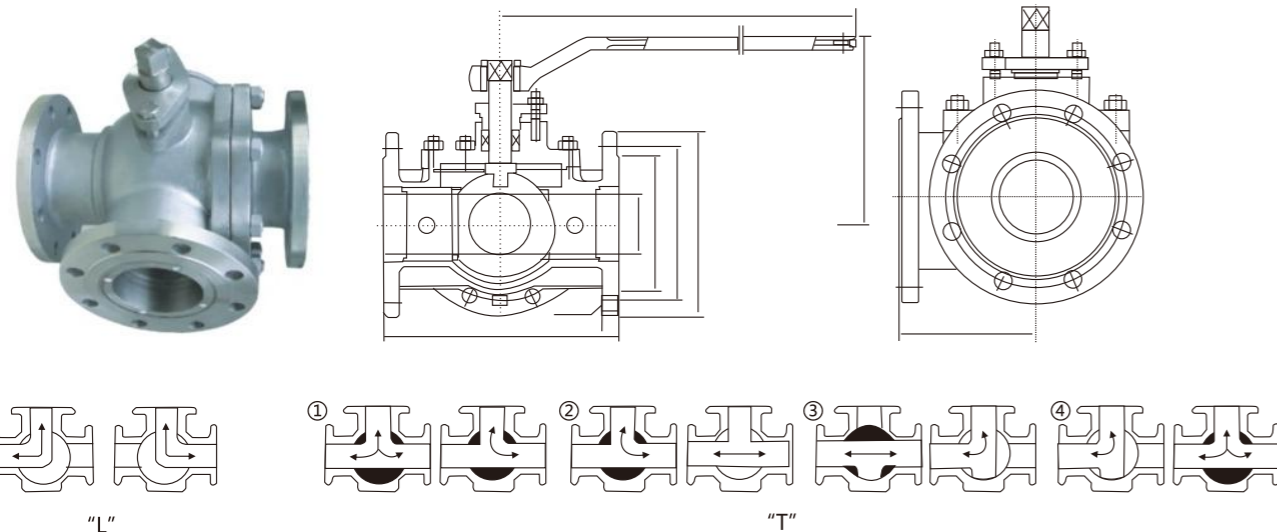
CLASS	NPS	d	L	H1	H2	H3	W
150Lb 300Lb	2	2	8.5	7.08	7.48	7.68	13.78
	3	3	11.125	7.87	8.27	8.27	15.75
	4	4	12	8.86	8.86	8.46	19.69
	6	6	18	11.22	11.42	-	-
	8	8	20.5	12.40	12.80	-	-
	10	10	22	12.99	16.14	-	-
	12	12	25	16.93	17.13	-	-
	14	13.25	30	18.30	18.90	-	-
	16	15.25	33	19.49	19.88	-	-
	18	17.25	36	23.03	23.81	-	-
	20	19.25	39	24.01	24.06	-	-
	24	23.25	45	25	25.98	-	-

PN	DN	d	L	H1	H2	H3	W
2.0MPa 5.0MPa	50	50	216	180	190	195	350
	80	76.2	283	200	210	210	400
	100	101.6	305	225	220	215	500
	150	152	457	285	290	-	-
	200	203	521	315	325	-	-
	250	254	559	330	410	-	-
	300	305	635	430	435	-	-
	350	337	762	465	480	-	-
	400	387	838	495	505	-	-
	450	438	914	585	605	-	-
500	489	991	610	625	-	-	
600	591	1143	635	660	-	-	

CLASS	NPS	d	L	H1	H2	H3	W
600Lb	2	2	11.5	7.08	7.48	7.68	23.62
	3	3	14	7.87	8.27	8.27	39.37
	4	4	17	8.86	8.86	8.46	59.05
	6	6	22	11.22	11.42	-	-
	8	8	26	12.40	12.80	-	-
	10	10	31	12.99	16.14	-	-
	12	12	33	16.93	17.13	-	-
	14	13.25	35	18.30	18.90	-	-
	16	15.25	39	19.49	19.88	-	-
	18	17.25	43	23.03	23.81	-	-
	20	19.25	47	24.01	24.06	-	-
	24	23.25	55	25	25.98	-	-

PN	DN	d	L	H1	H2	H3	W
10.0MPa	50	50	292	180	190	195	350
	80	76.2	355.6	200	210	210	400
	100	101.6	431.8	225	220	215	500
	150	152	558.8	285	290	-	-
	200	203	660.4	315	325	-	-
	250	254	787.4	330	410	-	-
	300	305	838.2	430	435	-	-
	350	337	889	465	480	-	-
	400	387	990.6	495	505	-	-
	450	438	1092.2	585	605	-	-
500	489	1193.8	610	625	-	-	
600	591	1397	635	660	-	-	

TEE Ball Valves



Main External and Connection Dimension

Unit:mm

Type	Nominal Diameter	PN1.6MPa								WT (Kg)
		L	D	D1	D2	b	Z-Φd	H	W	
Q44F-16C Q44F-16P	15	108	95	65	45	14	4-Φ14	95	140	4
	20	117	105	75	55	14	4-Φ14	105	160	5
	25	127	115	85	65	14	4-Φ14	113	180	7
	32	140	135	100	78	16	4-Φ18	135	250	12
Q644F-16C Q644F-16P	40	165	145	110	85	16	4-Φ18	142	300	15
	50	178	160	125	100	16	4-Φ18	154	350	20
Q944F-16C Q944F-16P	65	191	180	145	120	18	4-Φ18	175	350	25
	80	203	195	160	135	20	8-Φ18	190	400	36
Q45F-16C Q45F-16P	100	229	215	180	155	20	8-Φ18	225	500	51
	125	356	245	210	185	22	8-Φ18	245	600	77
Q645F-16C Q645F-16P	150	394	280	240	210	24	8-Φ23	265	800	108
	200	457	335	295	265	26	12-Φ23	305	800	126
Q945F-16C Q945F-16P	250	533	405	355	320	30	12-Φ25	370	1300	186

Line Fluirine Ball Valve

Main Part Material

NO.	Name	Cast iron	Carbon steel	Stainless steel		Super low carbon stainless steel	
		Z	C	P	R	PL	RL
1	Body, Bonnet	HT250	WCB	CF8	CF8M	CF3	CF3M
2	Ball	WCB	WCB	CF8	CF8M	CF3	CF3M
3	Seat	FEP(F46) PCTFE(F3) PTFE(F4) PFA PO					
4	Gland flange	HT250	WCB	CF8	CF8M	CF3	CF3M
5	Packing	PTFE(F4)		PTFE(F4)			
6	Bolt	35	35	1Cr17Ni2	1Cr17Ni2	1Cr18Ni9	1Cr18Ni9
7	Nut	45	45	0Cr18Ni9	0Cr18Ni9	1Cr18Ni9	1Cr18Ni9
8	Handle	WCC	WCC	WCC	WCC	WCC	WCC

Main External and Connection Dimension

Unit:mm

Nomial diameter		Standard value							Reference value			
		L	D	D1	D2	f	b	Z-Φd	D0	H	W(Kg)	
		PN1.0(MPa)										
mm	in											
15	½	140	95	65	45	2	14	4-Φ14	120	80	2.5	
20	¾	140	105	75	55	2	16	4-Φ14	140	90	3	
25	1	150	115	85	65	2	16	4-Φ14	160	100	4.5	
32	1¼	165	135	100	78	2	18	4-Φ18	160	110	5.7	
40	1½	180	145	110	85	3	18	4-Φ18	200	120	7	
50	2	200	160	125	100	3	20	4-Φ18	250	135	9.5	
65	2½	220	180	145	120	3	20	4-Φ18	300	145	15	
80	3	250	195	160	135	3	22	4/8-Φ18	350	185	19	
100	4	280	215	180	155	3	22	8-Φ18	240	195	33	
125	5	320	245	210	185	3	24	8-Φ18	500	210	58	
150	6	360	280	240	210	3	24	8-Φ23	200*	450	93	
200	8	457	335	295	265	3	26	8-Φ23	240*	490	155	
250	10	533	390	350	320	3	28	12-Φ23	240*	550	210	
300	12	610	440	400	368	4	28	12-Φ23	320*	600	220	
350	14	686	500	460	428	4	30	16-Φ23	320*	675	245	
400	16	762	565	515	482	4	32	16-Φ25	360*	780	260	

Main External and Connection Dimension

Unit:mm

Nomial diameter		Standard value							Reference value			
		L	D	D1	D2	f	b	Z-Φd	D0	H	W(Kg)	
		PN1.6MPa										
mm	in											
15	½	140	95	65	45	2	14	4-Φ14	120	80	2.5	
20	¾	140	105	75	55	2	16	4-Φ14	140	90	3	
25	1	150	115	85	65	2	16	4-Φ14	160	100	4.5	
32	1¼	165	135	100	78	2	18	4-Φ18	160	110	5.7	
40	1½	180	145	110	85	3	18	4-Φ18	200	120	7	
50	2	200	160	125	100	3	20	4-Φ18	250	135	9.5	
65	2½	220	180	145	120	3	20	4-Φ18	300	145	15	
80	3	250	195	160	135	3	22	8-Φ18	350	185	19	
100	4	280	215	180	155	3	24	8-Φ18	240	195	33	
125	5	320	245	210	185	3	26	8-Φ18	500	210	58	
150	6	360	280	240	210	3	28	8-Φ23	200*	450	93	
200	8	457	335	295	265	3	30	12-Φ23	240*	490	155	
250	10	533	390	355	320	3	32	12-Φ25	240*	550	210	
300	12	610	440	410	375	4	34	12-Φ25	280*	600	220	
350	14	686	500	470	435	4	38	16-Φ25	320*	675	245	
400	16	762	565	525	485	4	40	16-Φ30	360*	780	260	

■ Chief Features

- Fullport ,Floating Or Trunnion Mounted Type
- Bolte Bonnet
- Blow Out Proof Stem
- Fire Durable And Ant Static Safety
- Structure Improve on API
- Opening And Closing Position
- Available With Worm Gear Operator
- Flanged Ends

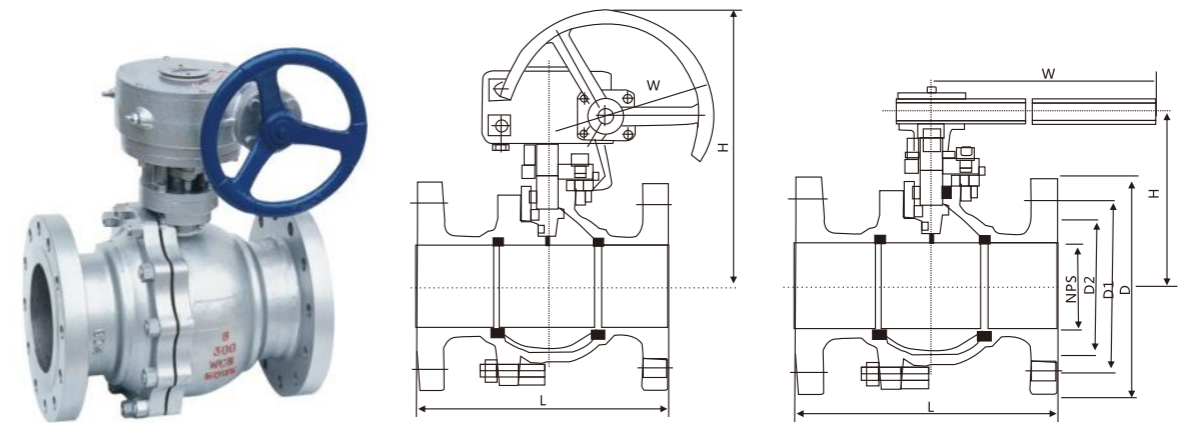


■ Product Specification

Product Specification	Design spec	Face to Face	Flanged End	Test & Check	Marking	Supply
	API 600	ANSI B16.10	ANI B16.5	API 598	MSS SP-25	API 608
	API 6D	API6D		API6D	API6D	API 6D

■ Main Part Material

Part Name	Part Material						
Body/Bonnet	A216-WCB	A105	A352-LCB	A351-CF8	A351-CF8M	A351-CF3	A351-CF3M
Ball	A182-F304	A182-F304	A182-F304	A182-F304	A182-F316	A182-F304L	A182-F316L
Stem	A182-F6a	A182-F6a	A182-F6a	A182-F304	A182-F316	A182-F304L	A182-F316L
Seat Ring	A105		A182-F304	A182-F316	A182-F304L	A182-F316L	
Seat	PTFE		E.PTFE				
Packing	PTFE+FPM		PTFE+FPM				
Gasket	18-8Flexible Graphite						
Bolt	A193-B8			A193-B8M			
Suitable Temp	-29~121°C	-40~121°C		-40~121°C		-40~121°C	
Suitable Medium	water, oil, steam		Nitric Acid		Acetic Acid		



■ Main External and Connection Dimension

Unit:mm

Type	Nominal Diameter		Class 150Lb								WT (Kg)
	in	mm	L	D	D1	D2	b	Z-Φd	H	W	
Q41F-150Lb Q41F-150LbP	1/2"	15	108	89	60.3	34.9	11.2	4-Φ15.8	55	130	2.3
	3/4"	20	117	98	39.8	42.9	12.7	4-Φ15.8	55	130	3.0
	1"	25	127	108	79.4	50.8	14.3	4-Φ15.8	70	160	4.5
	1 1/4"	32	140	117	88.9	63.5	15.7	4-Φ15.8	75	160	5.5
Q341F-150Lb Q341F-150LbP	1 1/2"	40	165	127	98.4	73	17.5	4-Φ15.8	90	200	7.0
	2"	50	178	152	120.6	92.1	19.1	4-Φ19	104	350	9.5
Q641F-150Lb Q641F-150LbP	2 1/2"	65	191	178	139.7	104.8	22.3	4-Φ19	153	400	15.0
	3"	80	203	190	152.4	127	23.9	4-Φ19	187	500	19
Q9B41F-150Lb Q9B41F-150LbP	4"	100	229	229	190.5	157.2	23.9	8-Φ19	206	500	33
	5"	125	355	229	215.9	185.7	23.9	8-Φ22.2	244	600	58
	6"	150	394	279	241.3	215.9	25.4	8-Φ22.2	252	600	93
	8"	200	457	343	298.4	269.9	28.5	8-Φ22.2	283	800	160
10"	250	533	406	362	323.8	30.2	12-Φ25.4	345	800	200	

■ Main External and Connection Dimension

Unit:mm

Type	NominalDiameter		Class 300Lb								WT (Kg)
	in	mm	L	D	D1	D2	b	Z-Φd	H	W	
Q41F-300Lb Q41F-300LbP	1/2"	15	140	95	66.7	34.9	14.2	4-Φ15.8	55	130	2.5
	3/4"	20	152	117	82.6	42.9	15.7	4-Φ19	55	130	3.5
	1"	25	165	124	88.9	50.8	17.5	4-Φ19	70	160	5.5
	1 1/4"	32	178	133	98.4	63.5	19	4-Φ19	75	160	8.0
Q341F-300Lb Q341F-300LbP	1 1/2"	40	190	156	114.3	73	20.6	8-Φ19	90	200	10.5
	2"	50	216	165	127	92.1	22.4	8-Φ22.2	104	350	14.5
Q641F-300Lb Q641F-300LbP	2 1/2"	65	241	190	149.2	104.8	25.4	8-Φ22.2	153	400	23.5
	3"	80	283	210	168.3	127	28.4	8-Φ22.2	187	500	30
Q9B41F-300Lb Q9B41F-300LbP	4"	100	305	254	200	157.2	31.8	8-Φ22.2	206	500	55
	5"	125	381	279	235	185.7	35	12-Φ22.2	244	600	81
	6"	150	403	318	269.9	215.9	36.6	12-Φ22.2	252	600	118
	8"	200	502	381	330.2	269.9	41.1	12-Φ25.4	283	800	200
10"	250	568	444	887.4	323.8	47.6	16-Φ28.5	345	800	250	

■ Main External and Connection Dimension

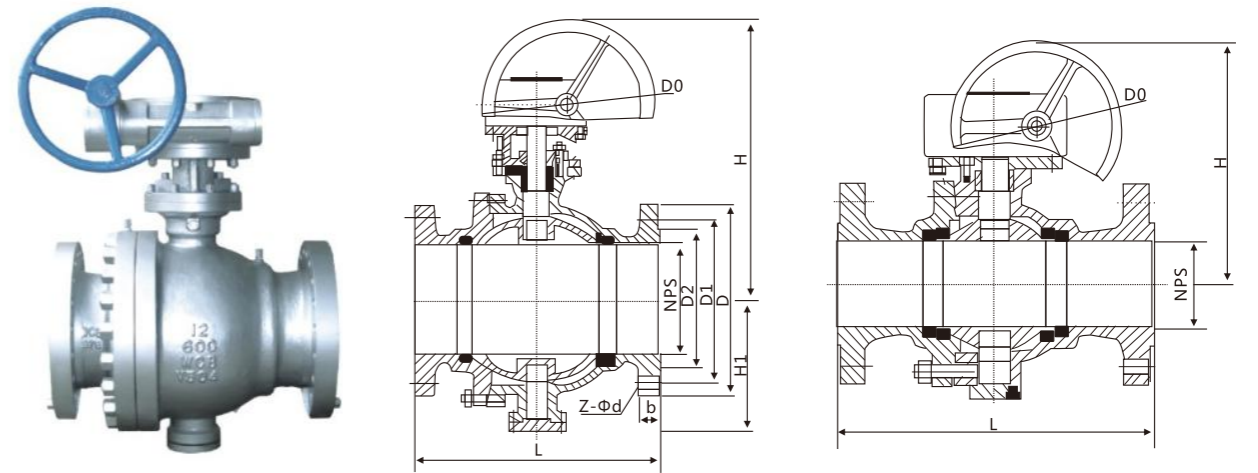
Unit:mm

Type	NominalDiameter		Class 600Lb								WT (Kg)
	in	mm	L	D	D1	D2	b	Z-Φd	H	W	
Q41F-600Lb Q41F-600LbP	1/2"	15	165	95	66.7	34.9	14.2	4-Φ15.8	70	-	3.8
	3/4"	20	190	117	82.6	42.9	15.7	4-Φ19	70	-	5.1
	1"	25	216	124	88.9	50.8	17.5	4-Φ19	75	-	7.2
	1 1/4"	32	229	133	98.4	63.5	19	4-Φ19	80	-	10.5
Q341F-600Lb Q341F-600LbP	1 1/2"	40	241	156	114.3	73	20.6	4-Φ22.2	98	-	17.6
	2"	50	292	165	127	92.1	22.4	8-Φ19	155	400	20
Q641F-600Lb Q641F-600LbP	2 1/2"	65	330	190	149.2	104.8	25.4	8-Φ22.2	205	400	32
	3"	80	356	210	168.3	127	28.4	8-Φ22.2	238	600	41
Q9B41F-600Lb Q9B41F-600LbP	4"	100	632	273	215.9	157.2	31.8	8-Φ25.4	276	600	70
	5"	125	508	330	266.7	185.7	35	8-Φ28.5	305	600	110
	6"	150	559	356	292.1	215.9	36.6	12-Φ28.5	322	800	150
	8"	200	660	419	349.2	269.9	41.1	12-Φ31.8	356	800	200
10"	250	787	508	431.8	323.8	47.6	16-Φ35	400	800	280	

■ Main External and Connection Dimension

Unit:mm

Type	NominalDiameter		Class 150Lb								WT (Kg)	
	in	mm	L	D	D1	D2	b	Z-Φd	H	H1		W
Q47F-150Lb Q47F-150LbP	2"	50	178	152	120.6	92.1	19.1	4-Φ19	177	120	-	15
	2 1/2"	65	191	178	139.7	104.8	22.3	4-Φ19	190	140	-	19
	3"	80	203	190	152.4	127	23.9	4-Φ19	210	150	-	27
	4"	100	229	229	190.5	157.2	23.9	8-Φ19	235	172	-	38
Q347F-150Lb Q347F-150LbP	5"	125	356	229	215.9	185.7	23.9	8-Φ22.2	350	195	-	58
	6"	150	394	279	241.3	215.9	25.4	8-Φ22.2	530	250	600	81
Q647F-150Lb Q647F-150LbP	8"	200	457	343	298.4	269.9	28.5	8-Φ22.2	620	290	600	140
	10"	250	533	406	362	323.8	30.2	12-Φ25.4	650	320	600	160
Q9B47F-150Lb Q9B47F-150LbP	12"	300	610	483	431.8	381	31.8	12-Φ25.4	780	360	800	205
	14"	350	686	533	476.2	412.8	35	12-Φ28.5	790	395	800	260
	16"	400	762	597	539.8	469.9	36.6	16-Φ28.5	920	435	800	390
	18"	450	846	635	577	533.4	39.7	16-Φ31.8	970	490	800	510
	20"	500	914	689	635	584.2	42.9	20-Φ31.8	1100	530	800	750
	24"	600	1067	813	749.3	692.2	47.7	20-Φ35	1150	590	800	1200



■ Main External and Connection Dimension

Unit:mm

Type	NominalDiameter		Class300Lb									WT (Kg)
	in	mm	L	D	D1	D2	b	Z-Φd	H	H1	W	
Q47F-300Lb Q47F-300LbP	2"	50	216	165	127	92.1	22.4	8-Φ22.2	177	120	-	20
	2 1/2"	65	241	190	149.2	104.8	2.4	8-Φ22.2	190	140	-	25
	3"	80	283	210	168.3	127	28.4	8-Φ22.2	210	150	-	30
	4"	100	305	254	200	157.2	31.8	8-Φ22.2	235	172	-	40
Q347F-300Lb Q347F-300LbP	5"	125	381	279	235	185.7	35	12-Φ22.25	350	195	-	65
	6"	150	403	318	269.9	215.9	36.6	12-Φ22.2	530	250	600	85
Q647F-300Lb Q647F-300LbP	8"	200	502	381	330.2	269.9	41.1	12-Φ25.4	620	290	600	100
	10"	250	568	444	387.4	323.8	47.8	16-Φ28.5	650	320	600	182
Q9B47F-300Lb Q9B47F-300bP	12"	300	648	521	450.8	381	50.8	16-Φ31.8	780	360	800	212
	14"	350	762	584	514.4	412.8	53.8	20-Φ31.6	790	395	800	288
	16"	400	838	648	571.5	469.9	57.2	20-Φ35	920	435	800	468
	18"	450	914	713	628.6	533.4	60.5	24-Φ35	970	490	800	587
	20"	500	991	775	685.8	584.2	68.5	24-Φ35	1100	530	800	863
	24"	600	1143	914	812.8	692.2	69.9	24-Φ41.1	1150	590	800	1396

Type	NominalDiameter		Class600Lb									WT (Kg)
	in	mm	L	D	D1	D2	b	Z-Φd	H	H1	W	
Q47F-600Lb Q47F-600LbP	2"	50	292	165	127	92.1	25.4	8-Φ19	177	120	-	26
	2 1/2"	65	330	190	149.2	104.8	28.4	8-Φ22.2	190	140	-	36
	3"	80	356	210	168.3	127	31.85	8-Φ22.2	210	150	-	56
	4"	100	432	273	215.9	157.2	38.14	8-Φ25.4	235	172	-	81
Q347F-600Lb Q347F-600LbP	5"	125	508	330	266.7	185.7	44.5	8-Φ28.5	350	195	-	120
	6"	150	559	356	292.1	215.9	47.8	12-Φ28.5	530	250	600	142
Q647F-600Lb Q647F-600LbP	8"	200	680	419	349.2	269.9	55.6	12-Φ31.8	620	290	600	287
	10"	250	787	508	431.8	323.8	63.5	16-Φ35	650	320	600	540
Q9B47F-600Lb Q9B47F-600bP	12"	300	838	559	489	381	66.5	20-Φ35	780	360	800	780
	14"	350	689	603	527	412.8	69.9	20-Φ38.1	790	395	800	1000
	16"	400	991	686	603.2	469.9	76.2	20-Φ41.1	920	435	800	1300
	18"	450	1092	743	654	533.4	82.6	20-Φ44.5	970	490	800	1700
	20"	500	1194	813	723.9	584.2	88.9	24-Φ44.5	1100	530	800	2100
	24"	600	1397	940	838.2	692.2	101.6	24-Φ50.8	1150	590	800	3400

Check Valve

■ Chief Features

- Bolte Bonnet
- Swing Or Lift Type Disc
- For Horizontal Or Vertical Lines
- Flanged Ends



■ Prodrct Specification

Product Specification	Design spec	Face to Face	Flanged End	Test & Check	Pressure-Temp	Marking	Supply
	GB/T 12236 GB/T 12235	GB/T 12221	JB/T 79	JB/T 9092	GB/T 9131	GB/T 12220	JB/T 7928

■ Main Part Material

Part Name	Body Material Code			
	Body/Bonnet	WCB	WCB	LCB
Disc	25	1Cr18Ni9Ti	1Cr18Ni9Ti	1Cr18Ni9Ti
Stem Arm	WCB	25Cr2MoV	LCB	CF8M
Garphite Gasket	18-8Flexible Graphite			
Bolt	35/35CrMo	25CrMoV	1Cr18Ni9	1Cr18Ni9
Sultable Temp	-29-426°C	-29-550°C	-40-350°C	-40-550°C
Suitable Medium	water,oll,steam	oll,steam	Steam, Oil	Nitrc Acid